

THE  
SPORTSMAN'S  
GALLERY, LTD.<sup>SM</sup> & PADEREWSKI  
*fine art*







**Rod Crossman**  
*Training Days*  
 acrylic on canvas  
 24" x 36"

**PADEREWSKI FINE ART & THE SPORTSMAN'S GALLERY, LTD.**

BEAVER CREEK  
 158 Plaza  
 Beaver Creek, CO 81620  
 970-949-6036

CHARLESTON  
 165 King Street  
 Charleston, SC 29401  
 843-727-1224

NASHVILLE  
 73 White Bridge Road, Suite 103-183  
 Nashville, TN 37205  
 615-516-9766

**SportsmansGallery.com | PaderewskiFineArt.com**

FRONT COVER:

**Robert Bateman**  
*Cape Buffalo* - oil on canvas  
 31.75" x 47.25"  
 signed lower right



**Edmund H. Osthaus (1858-1928)**  
*Setters* - watercolor - 15" x 10.75" - signed lower left

*Dear Friends,*

*Welcome to our 30th Catalog. It's hard to believe how much time has passed since I first opened my doors. Many of you were friends when I first met my beautiful wife, and the birth of each of our three wonderful boys. Now with 50 in my rearview mirror and looking towards the autumn of my life, the time spent with my boys has become even more precious. One is in college, and two more soon to follow. Although I still have a few things to pass along, it is amazing to see their self-sufficiency on the water, in the field, and in the mountains.*

*I am proud to have brought the joy of an outdoor lifestyle to the next generation. For the sake of conservation, I hope others do the same. It's also a wonderful way to instill a strong work ethic in children. I can promise you that it's easier for me to ask my boys to carry a sack of decoys a quarter of a mile in pluff mud than to take out the trash!*

*I would also like to mention that with all of the changes that have taken place over the past 27 years, both personally and professionally, there has been one constant – Jen Gibbs of Gibbs Creative. For those of you who received my first catalog and now receive this one, Jen is to thank for the beautiful layout of every page in every catalog, every year. Thank you, Jen!*

*Wishing you all a peaceful and prosperous 2025,*

***Michael Paderewski***





**C. Ford Riley**  
*Late Afternoon Glow*  
 oil on canvas  
 30" x 24"



**Jim Rataczak**  
*Three Bobwhites* - oil - 12" x 16"





Harley Bartlett  
*In the High Ground* - oil on canvas - 20" x 20"



Aiden Lassell Ripley (1896-1969)  
*Partridge Under the Pines* - watercolor - 21" x 29.5" - 1948 - signed lower left





Aiden Lassell Ripley (1896-1969)  
*Fleeing Grouse* - watercolor - 17" x 22" - 1936 - signed lower right



Aiden Lassell Ripley (1896-1969)  
*Woodcock in Flight* - watercolor - 15" x 21" - 1937 - signed lower left





Alan Shuptrine  
*Southbound* - watercolor - 22.5" x 30"



Jeff Craven  
*Late in the Season* - watercolor - 10" x 14"





**Robert Abbett (1926-2015)**

*Pheasant - oil on panel - 18" x 24" - signed lower left*



**Robert Abbett (1926-2015)**

*Quail - oil on canvas - 30" x 40" - signed lower left*





**Harry Curieux Adamson (1916-2012)**

*Quail Covey - oil on canvas - 20" x 28" - signed lower right*



**Robert Abbett (1926-2015)**

*Split Rail Bobwhites - oil on panel - 24" x 36" - 1974 - signed lower left*





David Hagerbaumer (1921-2014)

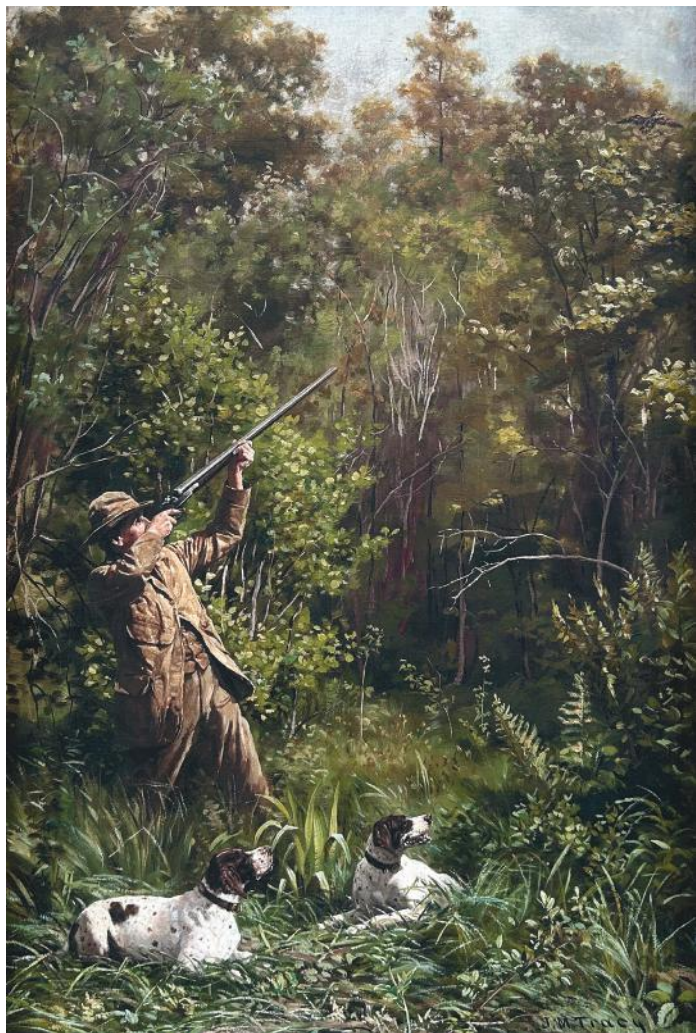
*Quail Covey* ~ watercolor ~ 24" x 36" ~ signed lower left



David Hagerbaumer (1921-2014)

*Mallards in the Autumn Mist* ~ watercolor ~ 21" x 29" ~ signed lower left





**John Martin Tracy (1843-1893)**  
*Woodcock Shooting*  
 oil on canvas laid to board  
 18" x 12" - signed lower right



**Brett Smith**  
*Aspen Grove Grouse* - oil on linen - 14" x 26"





**John Whorf (1903-1959)**  
*Bird Hunters* ~ watercolor ~ 19" x 25" ~ signed lower right



**Chet Reneson**  
*Quail Shooting at Medway* ~ watercolor ~ 22" x 30" ~ signed lower right





**John Kobald**  
*Four Mallards* - bronze, edition of 25 - lifesize



**John Kobald**  
*Pintails & Widgeon* - bronze, edition of 25 - lifesize



**Rod Crossman**  
*Flooded Field* - acrylic on linen - 18" x 24"





**Jared Knox**  
*Runway* ~ acrylic on canvas ~ 24" x 36"



**Milton C. Weiler (1910-1974)**  
*Mallards Pitching In* ~ watercolor ~ 22" x 30" ~ signed lower right





**Frank W. Benson (1862-1951)**  
*Eiders at Play* - watercolor - 13" x 26" - signed lower left



**Roland Clark**  
*Mallards in Flight* - watercolor - 18.5" x 25.5" - signed lower right





**Kent Lemon**  
*Called In* ~ oil on panel ~ 24" x 30"



**Peggy Watkins**  
*Grace of the A.C.E.* ~ oil on linen ~ 20" x 30"





**Dan Glanz**  
*Nose to the Feather* ~ life-size bronze, edition of 5 ~ 28" x 42" x 14"



**Bucky Bowles**  
*Hidden Covey* ~ oil on canvas ~ 18" x 24"





**Roger Blum**  
*Spaniel in Upland Field* ~ oil on linen ~ 18" x 24"



**Dennis Minor**  
*Pair of Setters* ~ oil on panel ~ 36" x 48" ~ 2007





**Mark Goodwin**  
*Patina Bronze Belt Buckle with Buffalo Leather Belt ~ \$225*

*Please note that the base bronze patina can vary, as seen here.*



**Julie Jeppsen**  
*Solo Flush ~ oil on canvas ~ 22" x 40"*





**Robert Abbett (1926-2015)**  
*Duke* - oil on panel - 30" x 24" - 1978 - signed lower left



**Liz Lewis**  
*Brittany Spaniel - Pointing, Life Size* - bronze, edition of 18 - 30" x 15" x 24"





**Robert Abbett (1926-2015)**  
*Pointer & Quail* - bronze, edition of 20 - 9" x 13.75" x 12.25" - 1979



**Luke Frazier**  
*Breaking the Stillness* - oil on panel - 20" x 36"



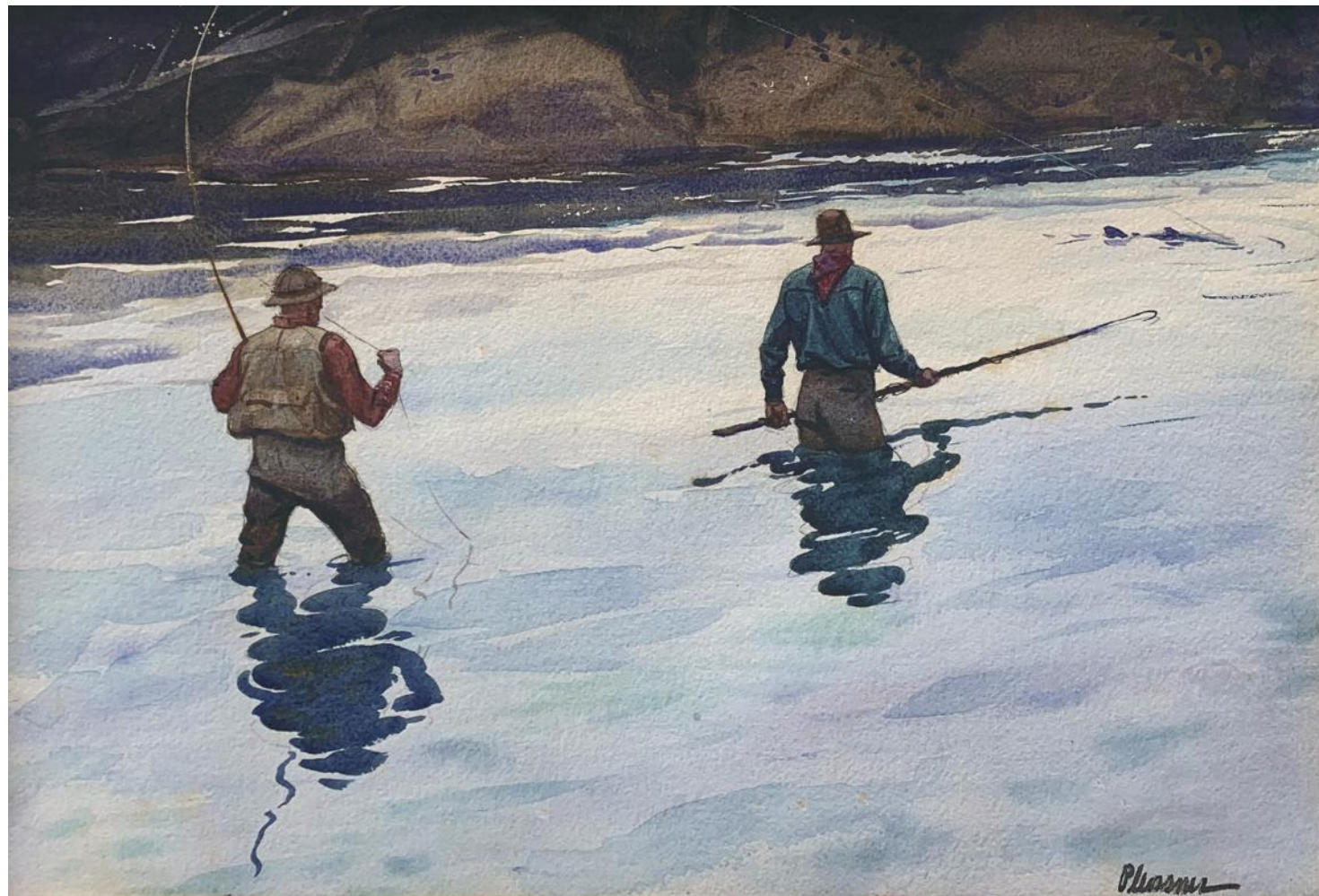


**Roger Cruwys**  
*Trout Pool* ~ oil on board ~ 21" x 27"



**Sean Witucki**  
*Reminiscing of Being a Boy* ~ oil on panel ~ 12" x 16"



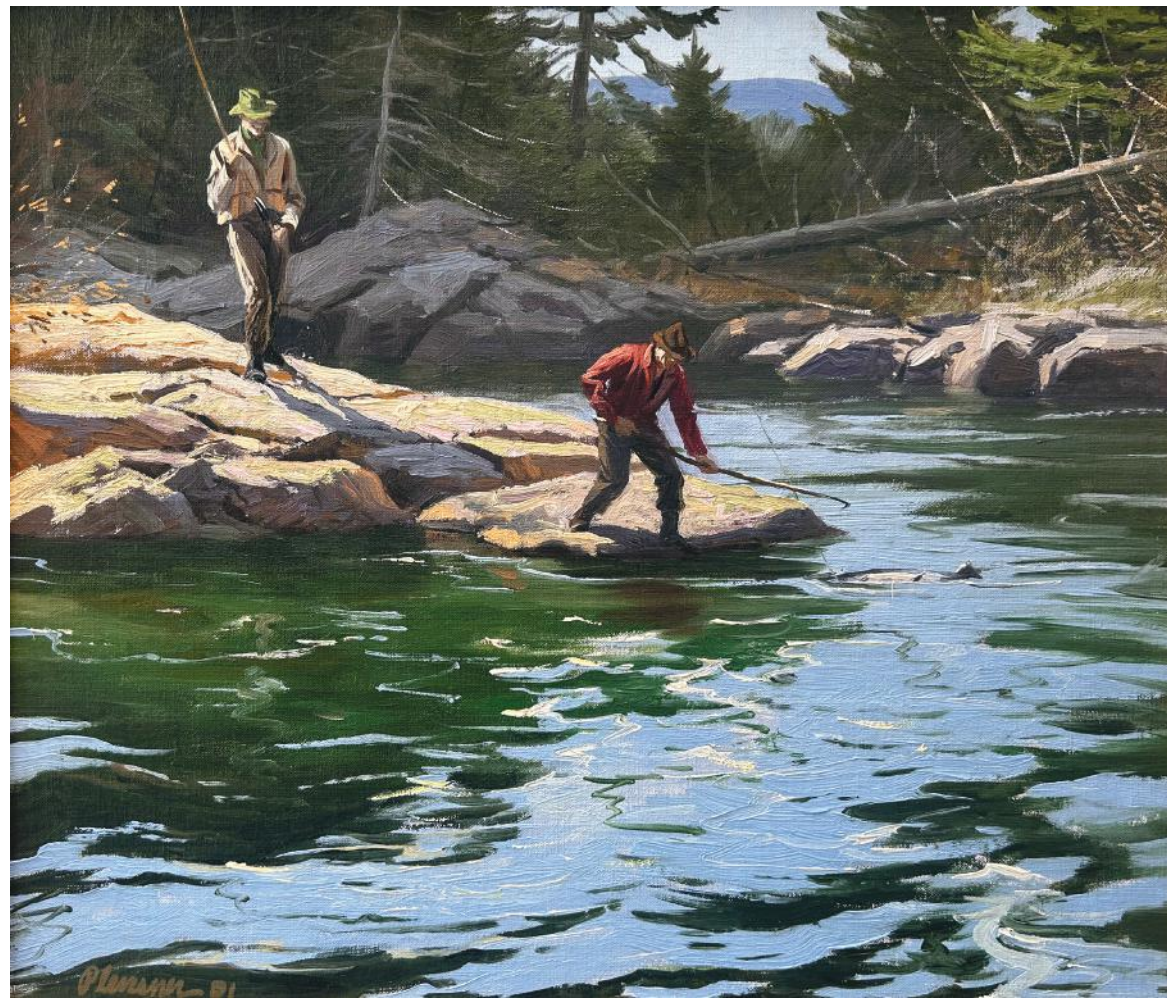


Ogden M. Pleissner (1905-1983)  
*Salmon Fishing* ~ watercolor ~ 14" x 21.25" ~ signed lower right



Walter Matia  
*South Fork* ~ bronze, edition of 15 ~ 13" x 31" x 8"





Ogden M. Pleissner (1905-1983)  
*Coming to the Gaff* - oil on canvas on board - 12" x 14" - 1931 - signed lower left

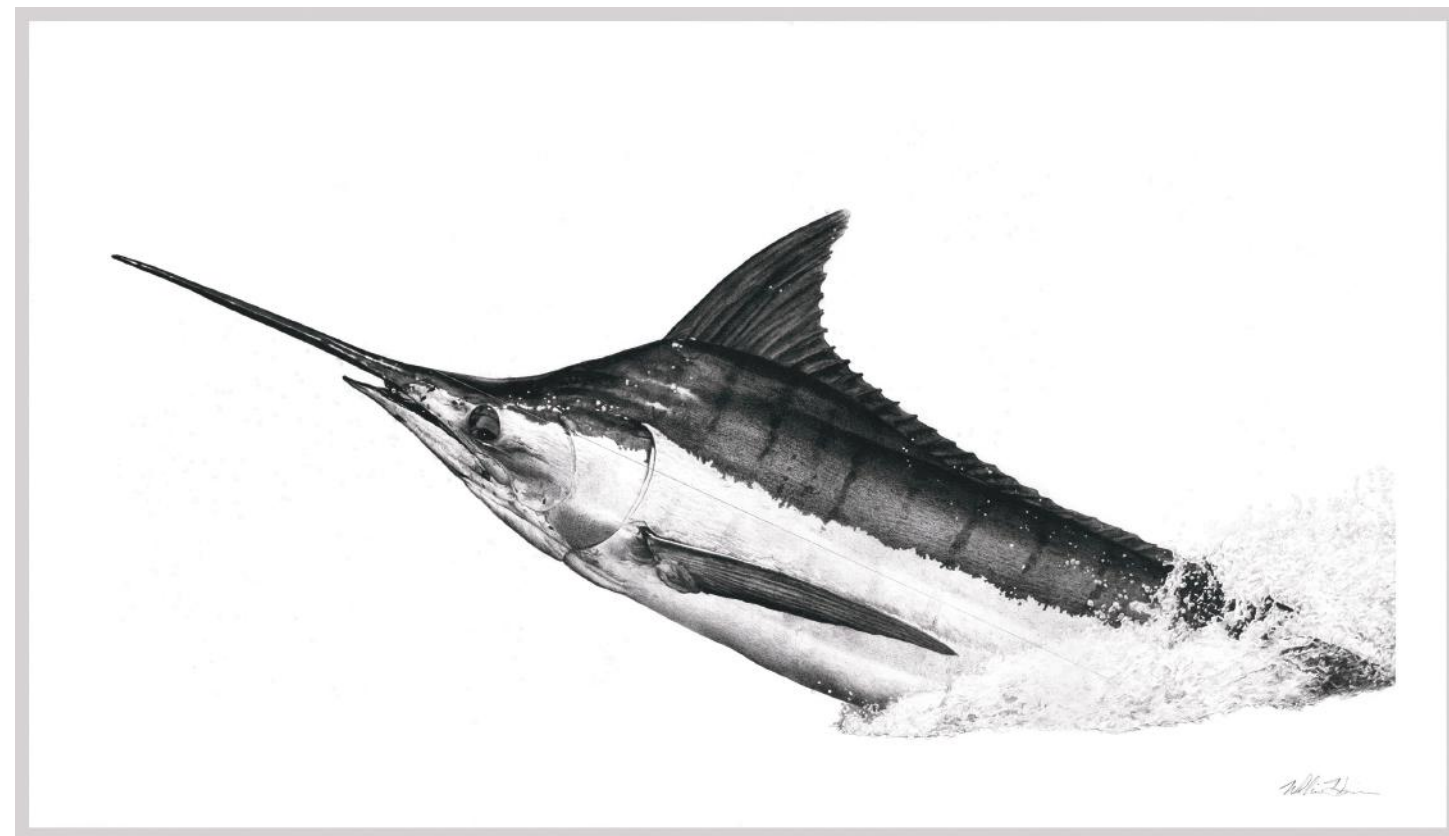


Mike Stidham  
*Golden Hour Redfishing* - oil on panel - 24" x 36"





**Mark Susinno**  
*Laser Focused* ~ oil on linen on panel ~ 18" x 24" inches



**Bill Harrison**  
*Blue Marlin* ~ carbon pencil ~ 25" x 44"





**Paul Puckett**  
*Putting on a Show* - oil on wood panel - 24" x 36"



**Kent Ullberg**  
*Merry Time Romance* - bronze, edition of 30 - 19" x 9" x 6"

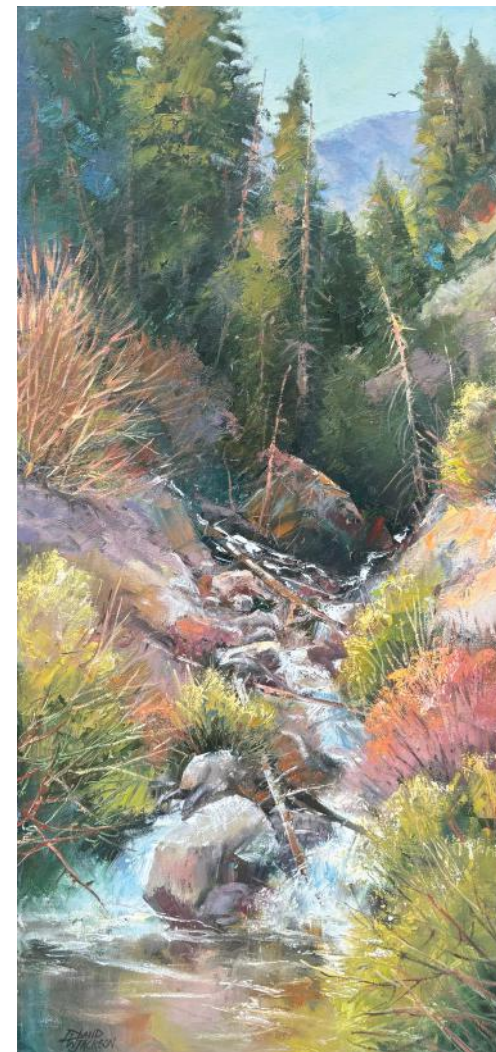


**Kent Ullberg**  
*Sail* - bronze, edition of 100 - 10.75" x 7.24" x 5.25"

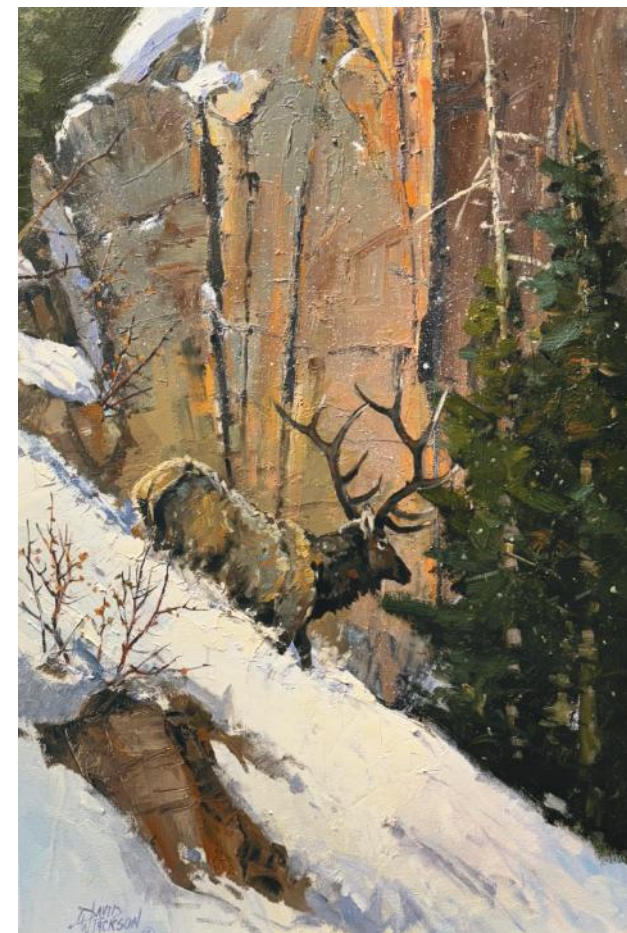




**Calvin Carter**  
*Whitetail Royalty* ~ oil on panel ~ 12" x 16"



**David Jackson**  
*Bear Canyon*  
 oil on canvas  
 40" x 18"



**David Jackson**  
*Stone Comforts* ~ oil on canvas ~ 30" x 20"





**Ewoud de Groot**  
*Twilight Elk* - oil on canvas - 51" x 51"



**Grant Hacking**  
*Western Vista*  
 oil on linen - 48" x 33"





**Luke Frazier**  
*Deep in the Woods* - oil on panel - 24" x 20"



**Michael Barlow**  
*Hammer Time* - bronze, edition of 10 - 15" x 21" x 7"

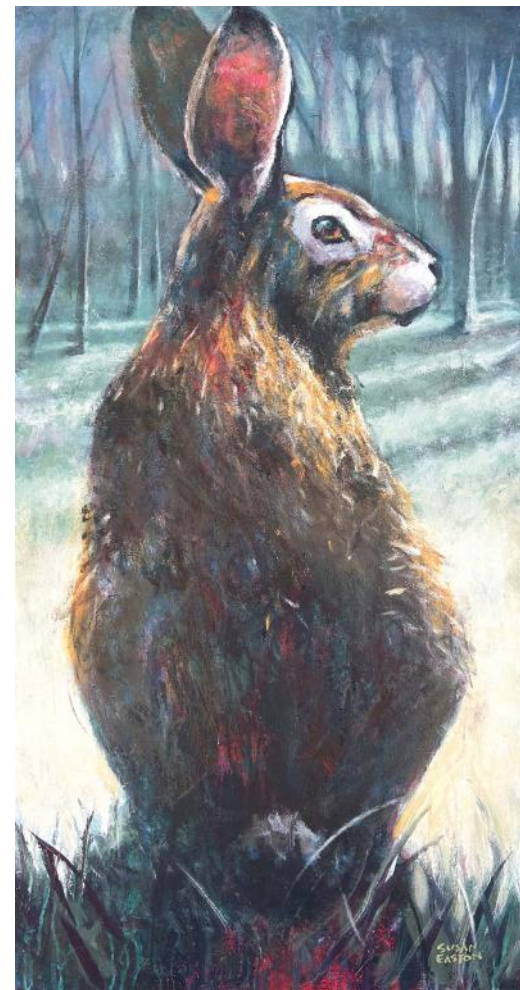




**Gary Lee Price**  
*Jewel of the Pond* ~ bronze, open edition ~ 17" x 17" x 8"



**Susan Easton**  
*Respect* ~ acrylic ~ 60" x 36"



**Susan Easton**  
*Night Rabbit* ~ acrylic ~ 48 x 24





Sue Key  
*Friendly Fox* ~ acrylic on linen ~ 26" x 34"



Cory McLaughlin  
*The Great Pause* ~ oil on canvas ~ 50" x 50"





**Laura Adams**  
*Betsy's Pond, Black-Crowned Night Herons* - paper collage on gallery wrapped canvas - 30" x 40"



**John Swan**  
*Spring Island* - watercolor - 12" x 20"





**Kathleen Frank**  
*Hidden Lake- Glacier* ~ Oil on Canvas ~ 37.5" x 49.5"



**Douglas Aagard**  
*Afternoon at 9,000 ft* ~ oil on canvas ~ 36" x 48"





**Garth Williams**  
*Autumn Whisper* ~ oil on canvas ~ 36" x 48"



**Michael Albrechtsen**  
*Cool Breeze* ~ oil on linen ~ 36" x 48"





**Kent Sullivan**  
*Ocean View* ~ Oil on canvas ~ 36" x 48"



**Helen LaFrance (1919-2020)**  
*BarBQue Stand* ~ oil on canvas ~ 18" x 24" ~ signed lower right





**Nicole Gaitan**  
*The Protector* - acrylic on canvas - 60" x 48"



**Patrick Matthews**  
*Blue Bird Day* - oil on canvas - 48" x 48"





**Andrew Bolam**  
*Custodian* ~ acrylic on canvas ~ 36" x 36"



**Billy Hassell**  
*Frying Pan River with Mountain Bluebirds* ~ oil on canvas ~ 36" x 48"





Donny Finley - *Gentle Breeze* - oil on canvas - 20" x 14"

THE  
SPORTSMAN'S  
GALLERY, LTD.<sup>SM</sup>  
&  
PADEREWSKI  
*fine art*

BEAVER CREEK

158 Plaza • P.O. Box 6850  
Beaver Creek, Colorado 81620  
970-949-6036

CHARLESTON

165 King Street  
Charleston, South Carolina 29401  
843-727-1224

NASHVILLE

73 White Bridge Road  
Suite 103-183  
Nashville, TN 37205  
615-516-9766

---

SportsmansGallery.com  
PaderewskiFineArt.com

---